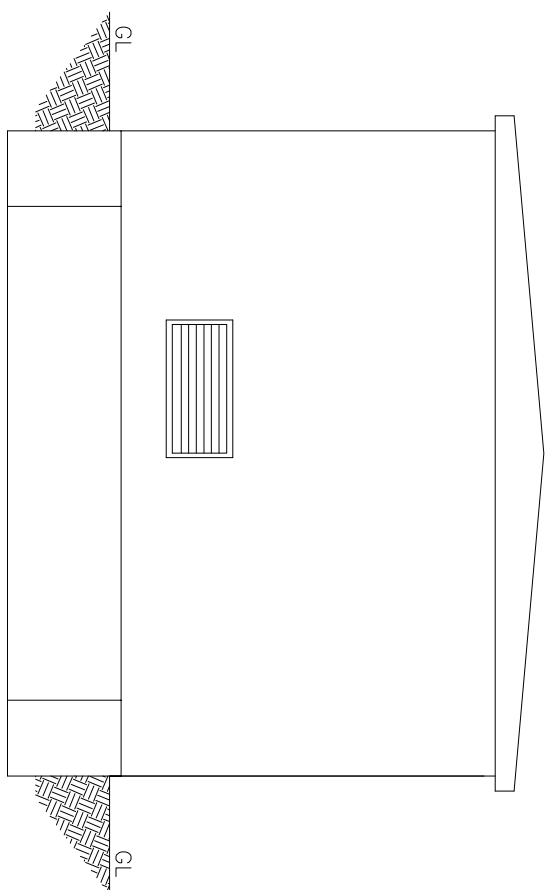
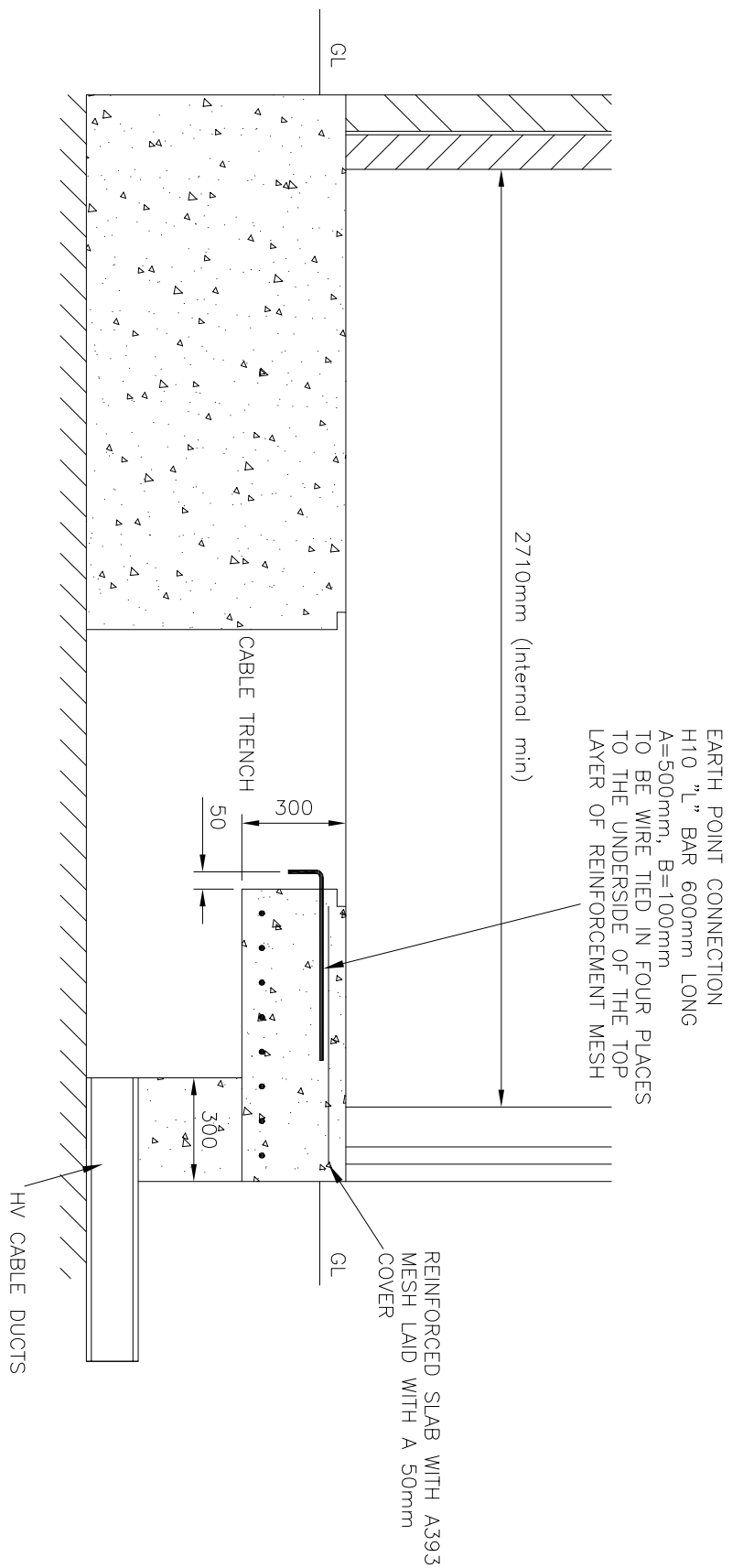


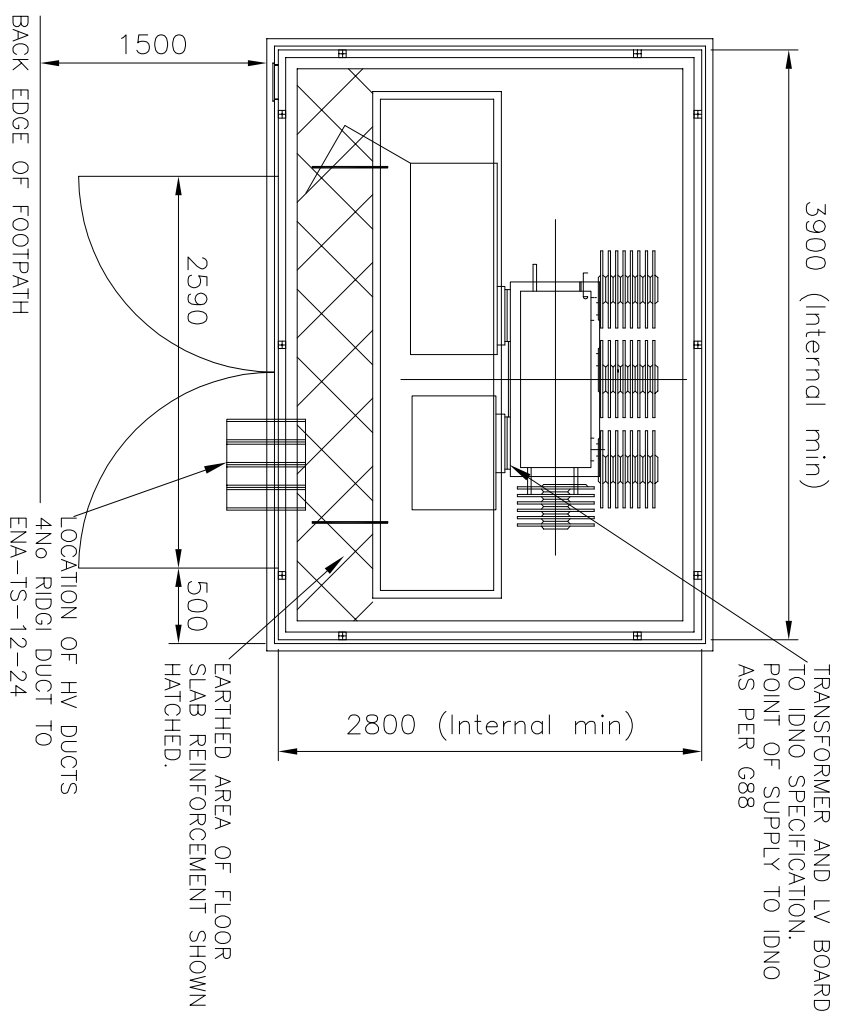
TYPICAL FRONT ELEVATION
SCALE 1:50



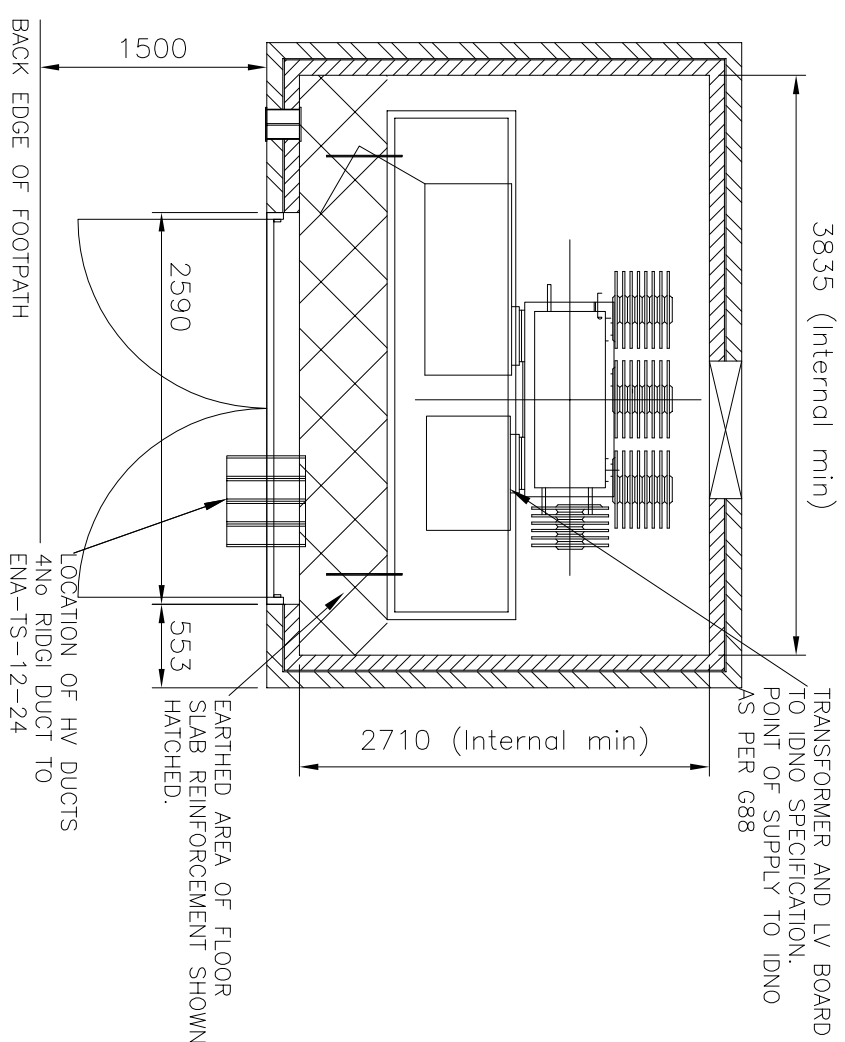
TYPICAL REAR ELEVATION
SCALE 1:50



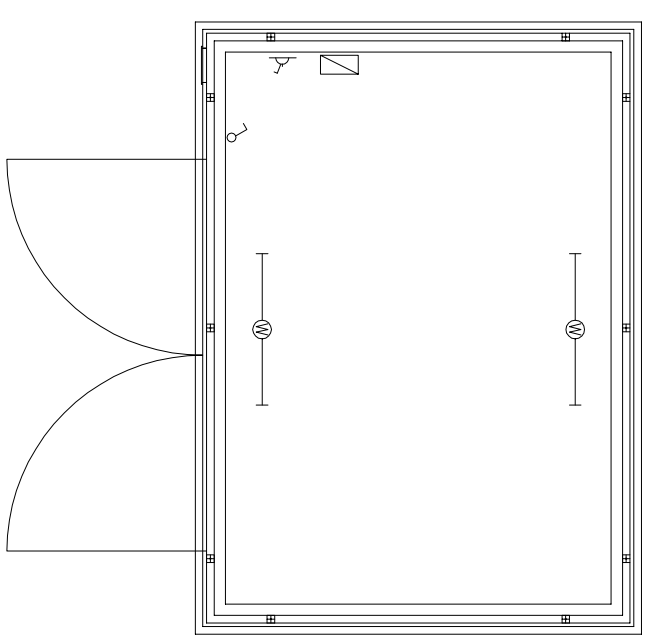
TYPICAL SECTION
SCALE 1:20



TYPICAL GRP ENCLOSURE PLAN
SCALE 1:50



TYPICAL MASORY ENCLOSURE PLAN
SCALE 1:50

TYPICAL POWER AND LIGHTING PLAN
1:50

<p>SUBSTATION CONSTRUCTION DETAILS</p> <p>GENERAL NOTES:</p> <p>Substation construction details to be to IDNO's policy and specification</p> <p>Cable is to be taken to ensure that access to cable openings is not impeded.</p> <p>No Gas, Sanitary, Water or other Services to run through or under the substation.</p> <p>Substation doors to be set back a minimum of 1500mm from back edge of footpath. Any proposed reduction in this clearance to be approved by Northern Powergrid following submission of site specific risk assessment and operational method statement.</p> <p>REFERENCE DRAWINGS:</p> <p>C978643 – Earth Point Connection Details</p> <p>Customer or their agent to obtain all necessary Planning and Building approvals before construction work commences</p> <p>This drawing is intended to indicate the minimum requirements for the installation of Northern Powergrid apparatus and is not in any way intended to describe the building to architectural, structural or other requirements.</p> <p>Substation to be designed in accordance with Northern Powergrid flood mitigation policy –NMP/001/012.</p> <p>Northern Powergrid Project Engineer to be notified of commencement of site works to enable site inspections to be carried out during construction.</p>



EQUIPMENT SCHEDULE		PLEASE TICK UNITS TO BE INSTALLED
SWITCHGEAR		
11kV R&U Non-Extendable – 200A Ring Main Unit with TLF Protection – Overcurrent and Earth Fault Protection		
Supplier Ref. – Schneider RM2C-T1/21/RM103853		
Commodity Code: 103853		
Inc: Ring Sw actuator wiring on both switches (630A), CTS		
Ring Sw WPS, 3 hole plates, CE54s, stud, sf6 oilarm contact		
Protection CTS = 100/50/5		
FPL (Nortrail 2350-NPC) on LIS – Supplier Ref: Cable Trail 2350-NPC – Commodity Code: 245880		
CABLES		
HV 300kA T ALPE Commodity code – 110400		
SMA Cables – 4 core SMA 2.5mm (used with PB TRIP) commodity code: 125460		
PROTECTION SETTINGS		
1000kVA 100/5 with 10A O/C TLF		
800kVA 100/5 with 7.5A O/C TLF		
500kVA 50/5 with 10A O/C TLF		
315kVA 50/5 with 5A O/C TLF		
1A EF TLF for oil Transformers		

PB HV TRIP – (IF REQUIRED BY IDNO)	
30V Battery Unit with Charger Commodity code: 215989	
Push Button Trip Commodity code:09457	

EARTHING	
S/S Earthing complies with Earthing Drawing C10.0820 – (COLD SITE)	
S/S Earthing complies with Earthing Drawing C10.0864 – (HOT SITE)	
EARTHING DRAWING TO BE ATTACHED WITH DESIGN APPROVAL SUBMISSION	

LOCKS AND LABELS	
Dual Locking facility to provide access for NPg/INDO employees	
Provision for NPg Internal S/S Nomenclature	
Provision for NPg External S/S Nomenclature	
External INDO Property Plate, S/S Name and Telephone No.	

NOTE: THE FULL LIST OF NORTHERN POWERGRID MATERIALS CAN BE FOUND ON THE ASSESSED PRODUCT DATABASE LINKED HERE: <http://www.northernpowergrid.com/asset/6/document/1828.xlsx>

 NORTHERN POWERGRID		Lloyds Court, 78 Grey Street, Newcastle Upon Tyne, NE1 6AE	
Manufacturer Details		11kV DNO RING DIRECT COUPLED DNO TRANSFORMER (PREFABRICATED OR MASONRY)	
Sheet No. 1	Scale AS SHOWN @A1		
Prepared By J.W.	Document Details		
Modified	Grid Reference	Drawing No. C1065235	Historic Drawing No.
Created 19-10-2016	Checked By J.J.	Revision 0	Notes
STANDARD DISTRIBUTION SUBSTATION DRAWING			