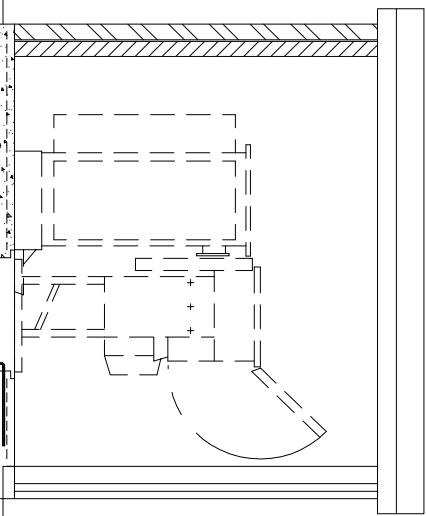
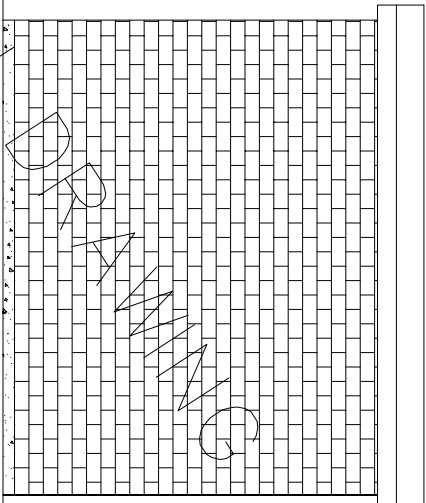
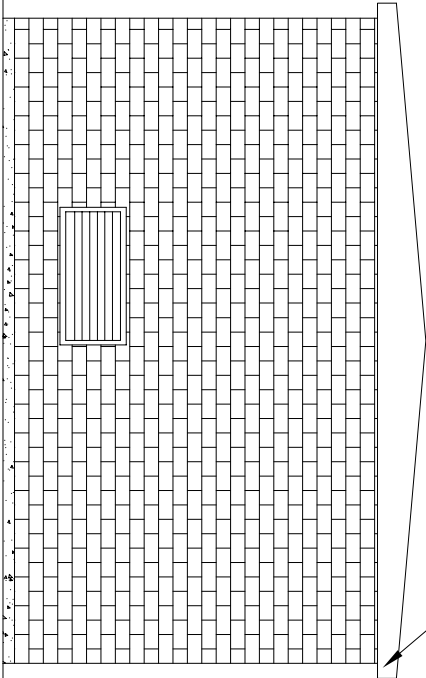
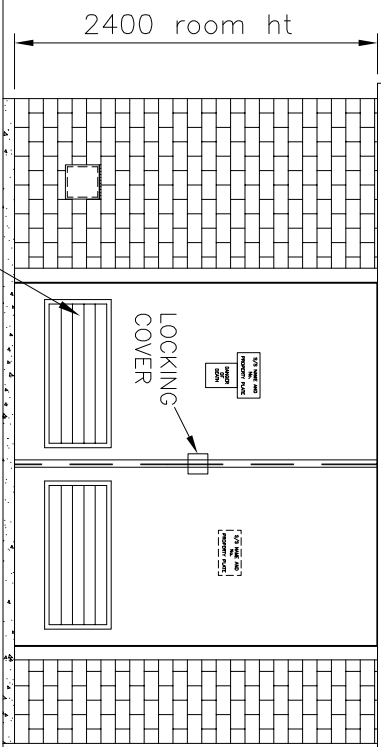


REMOVABLE GRP/STEEL ROOF FROM
NORTHERN POWERGRID NOMINATED
SUPPLIERS. ROOF TO BE INSTALLED
IMMEDIATELY AFTER SWITCHGEAR

ROOF TO HAVE EXPLOSION
RELIEF FITTINGS

EAVES VENTILATION
TO BE PROVIDED TO
3 SIDES (REAR & SIDES)



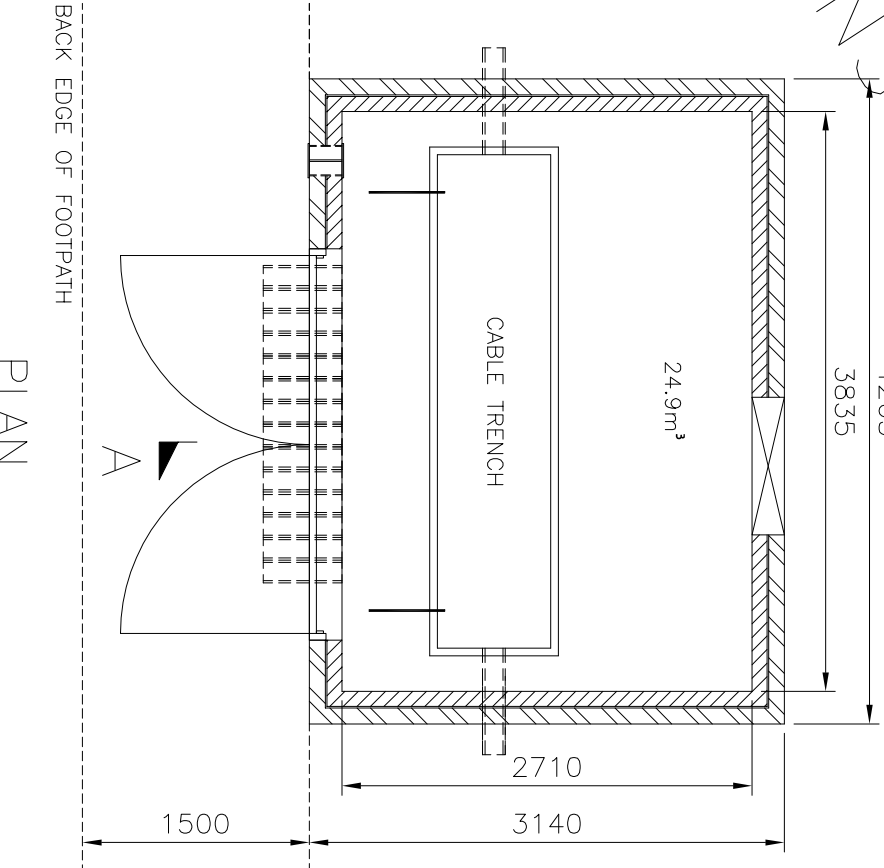
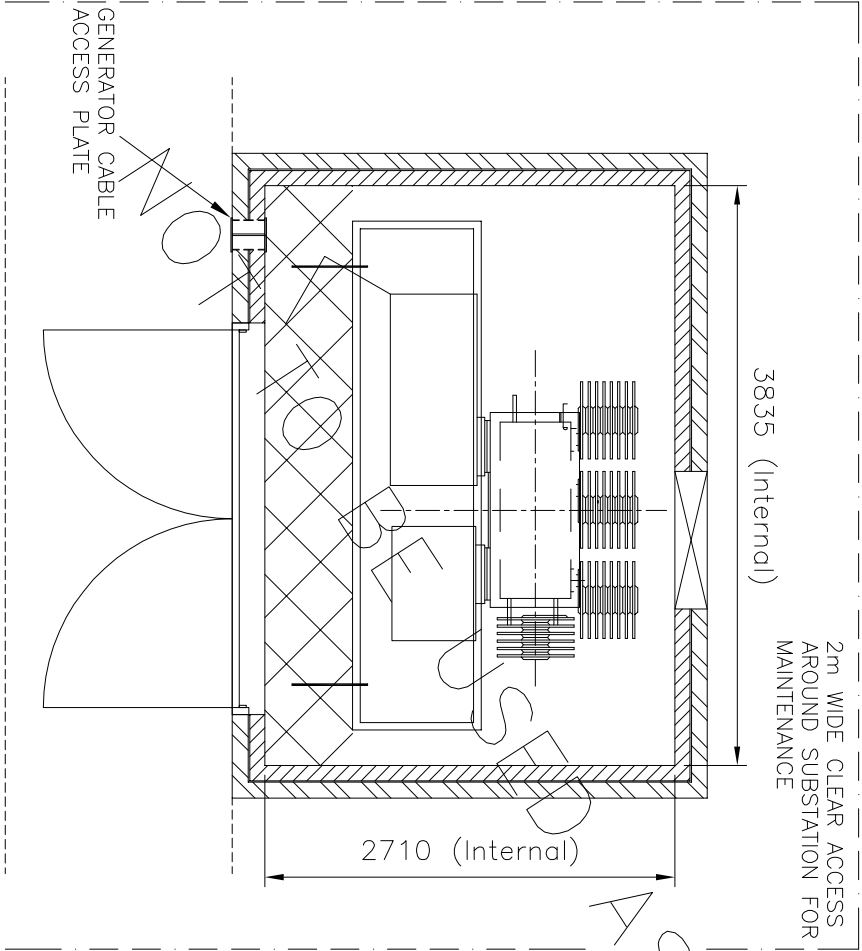
FRONT ELEVATION

REAR ELEVATION

SIDE ELEVATION

SECTION A-A

SUBSTATION DOORS TO MEET
SPECIFICATION WITH VENTILATION
OPENINGS, IN 2590x2400mm
HIGH BRICKWORK OPENING



NOTES

Substation doors to be set back a minimum of 1500mm
from back edge of footpath. Any proposed reduction in this
clearance to be approved by Northern Powergrid following
submission of site specific risk assessment and operational
method statement.

ELECTRICAL LAYOUT



Lloyds Court, 78 Grey Street, Newcastle Upon Tyne, NE1 6AF

Manufacturer Details

800 – 1000KVA UDE IN MASONRY ENCLOSURE

Sheet No.

Scale

1

AS SHOWN

Prepared By

TM

Document Details

Revised

Grid Reference

Ref No.

GENERAL ARRANGEMENT / PLAN & ELEVATIONS

Date Issued

Checked By

Revision

Notes

C993891

Historic Drawing No.