



FIG. 1 – EARTH ROD CONNECTION POINT
(Applies to all Sites)

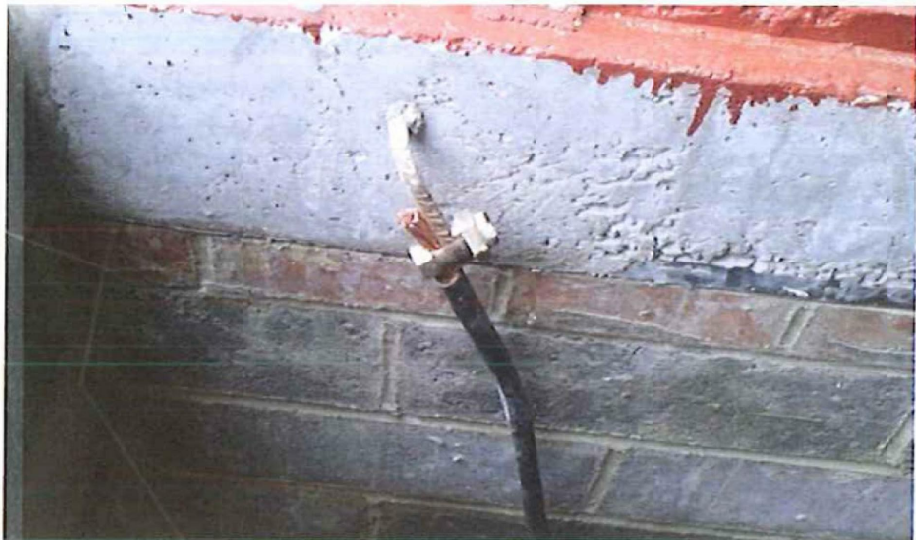


FIG. 2 - EARTH REBAR CONNECTION POINT
(Applies to all Sites)

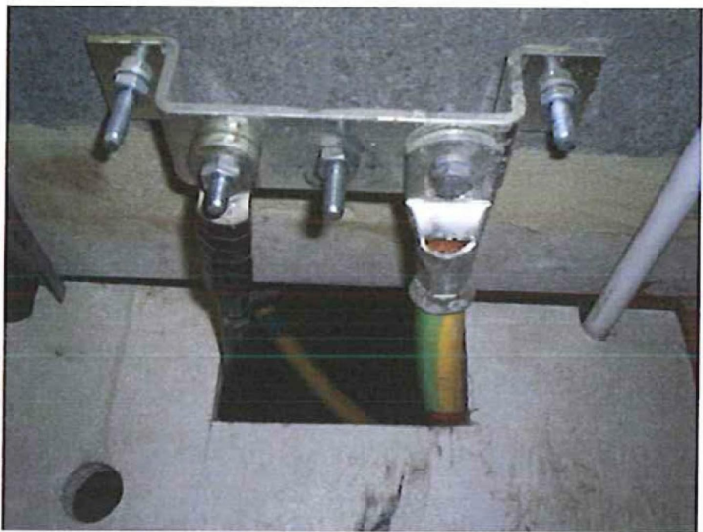


FIG. 5 - CONSUMER EARTH BAR
(Typical Transformer with MCCB Site Arrangement)



FIG. 3 - EARTH TAPE CONNECTION POINT
(Applies to all Sites)

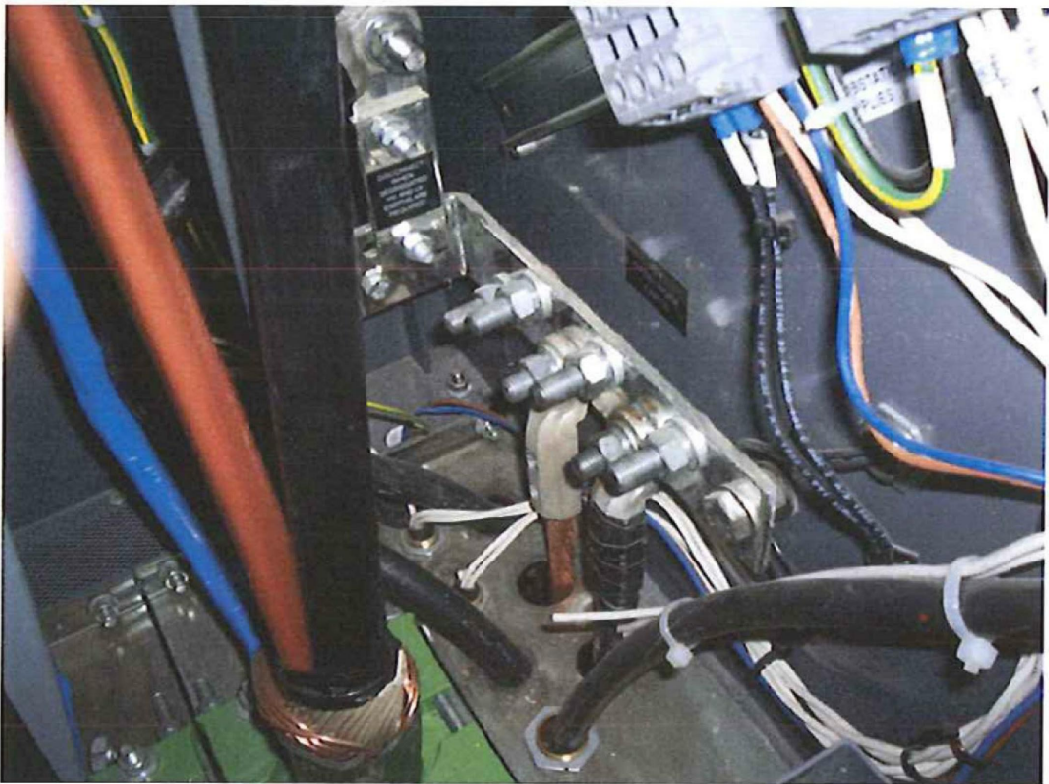



FIG. 4 - SWITCHGEAR EARTH CONNECTION WITHIN LV CABINET
(Typical Transformer with MCCB Site Arrangement)

		Lloyds Court, 78 Grey Street, Newcastle Upon Tyne, NE1 6AF	
Manufacturer Details		EARTHING CONNECTION POINT EXAMPLES FOR POLICY IMP/010/011	
Sheet No. 1 OF 1	Scale N.T.S.	Type PLANT DIAGRAMS	
Prepared By Barbara.Gordon		WIRING	
Revised 24/10/16	Grid Reference	Ref No.	C1010947
Date Issued 03/07/12	Checked By S CRAWFORD	Historic Drg.No.	C1010947
Revision A		Notes	