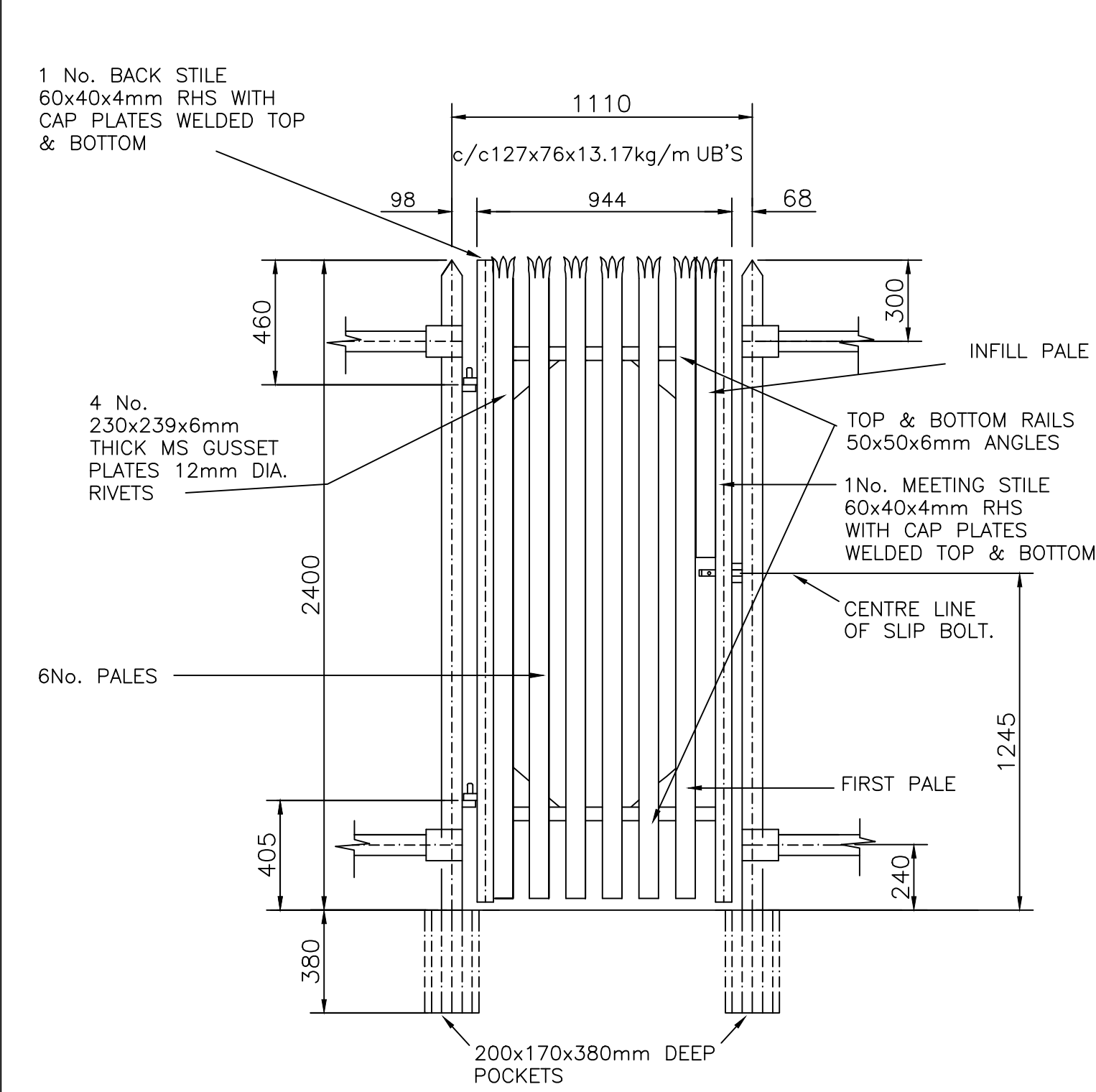
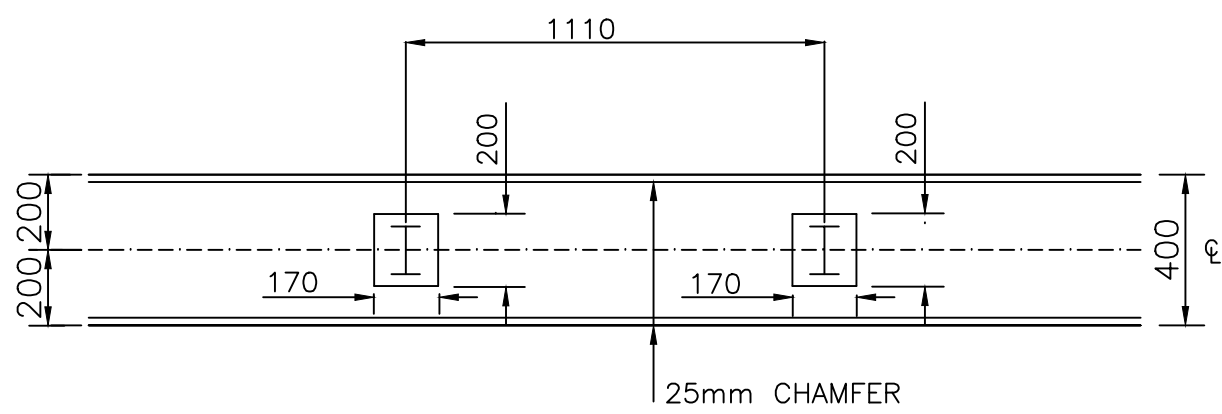


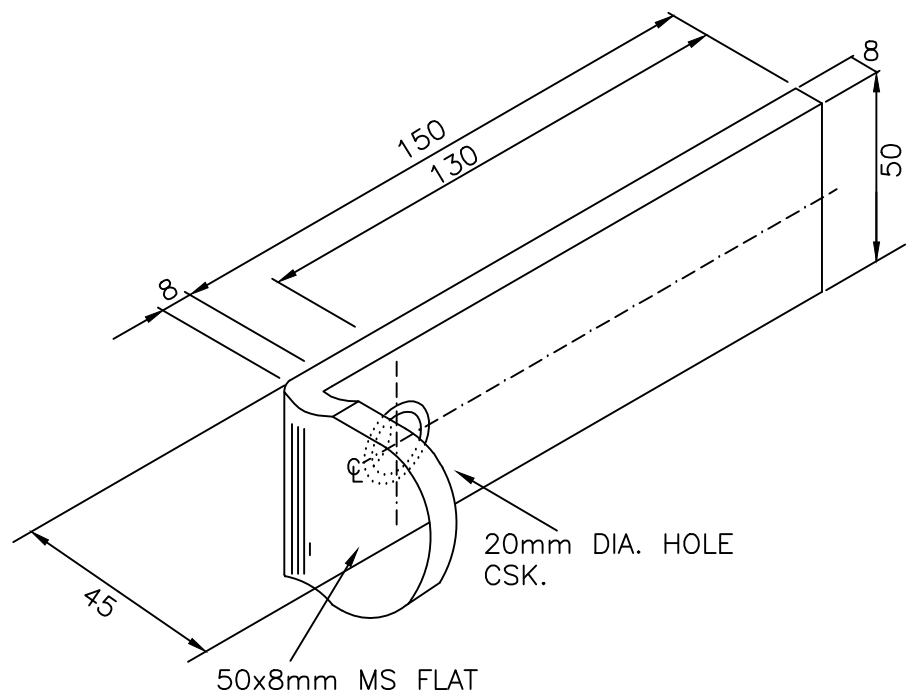
Do not scale this drawing, if in doubt ask, and verify all dims on site



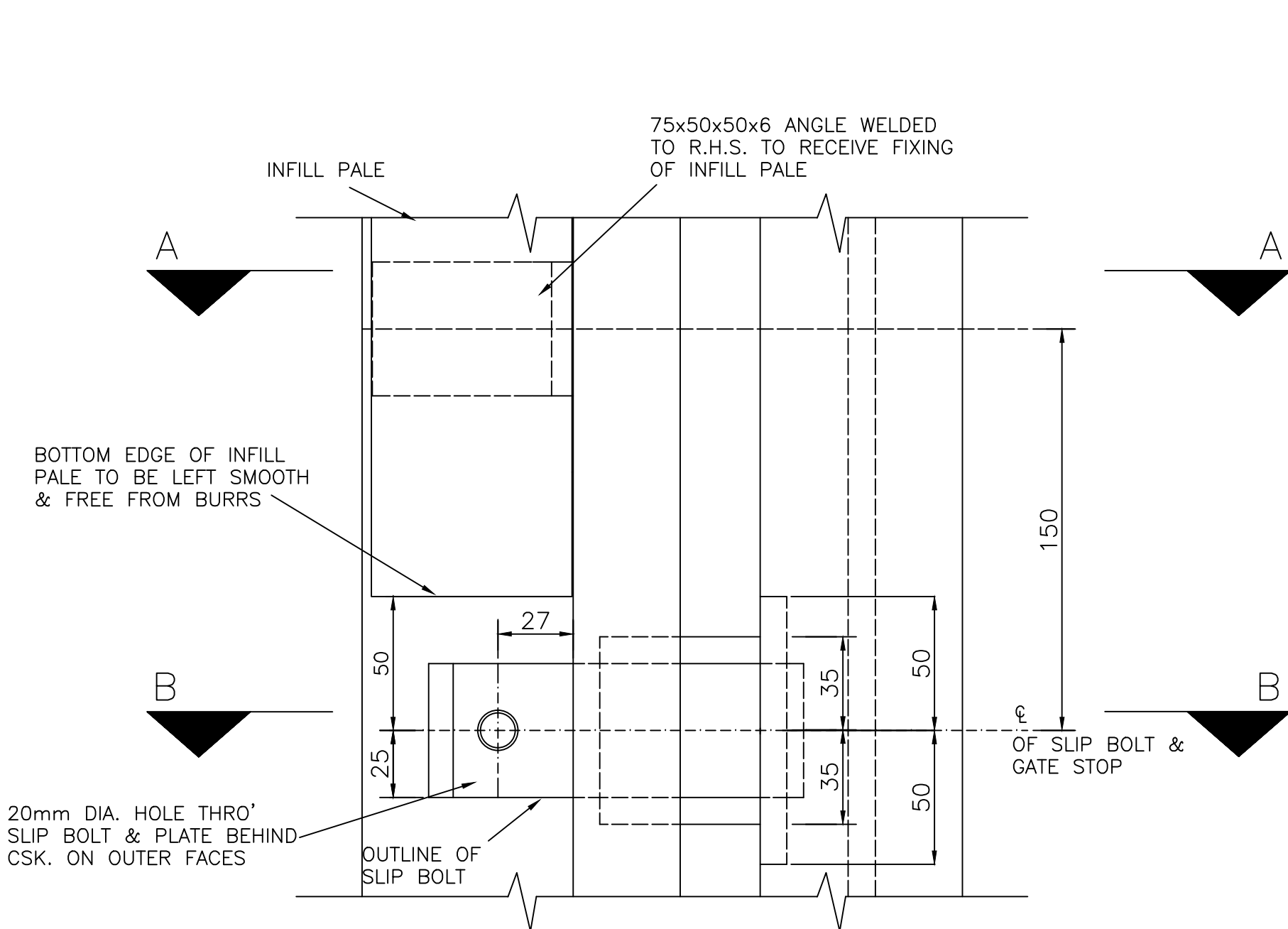
ELEVATION OF 944 WIDE
GATE 1:20



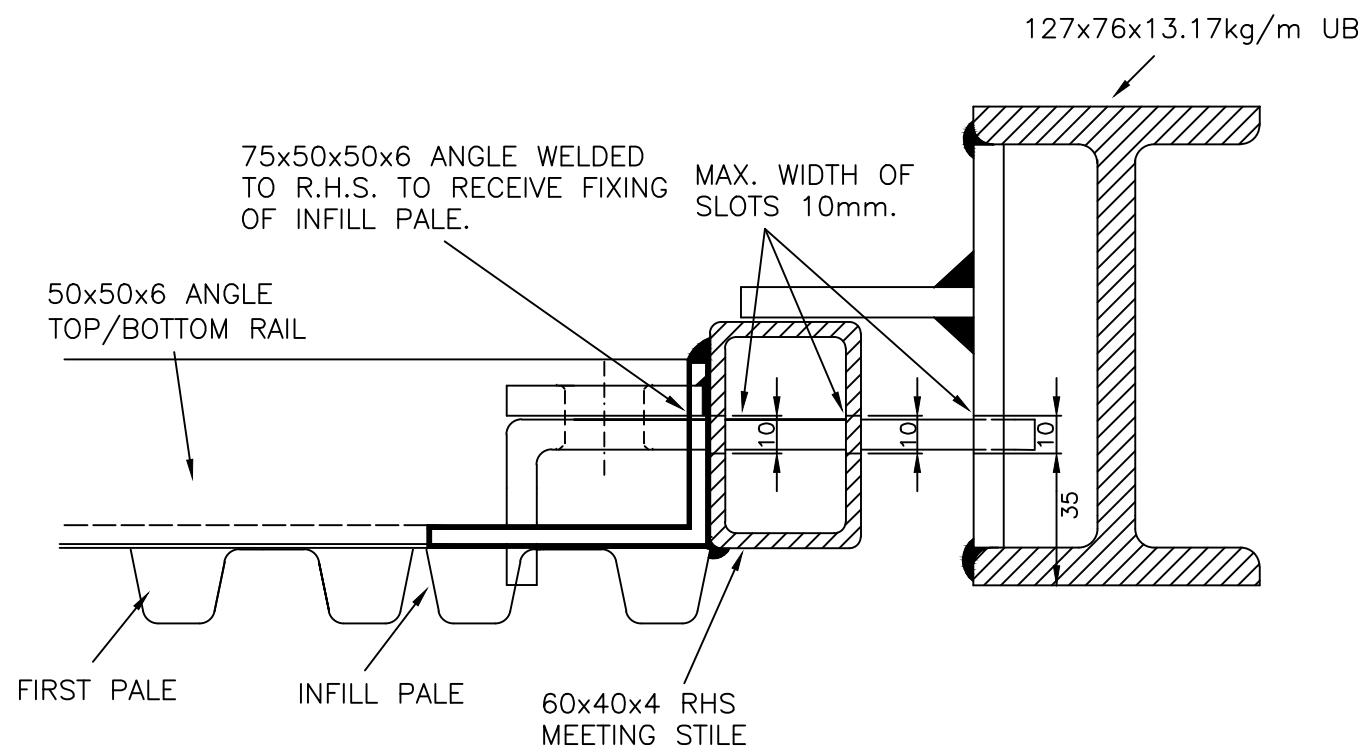
PLAN OF FENCE KERB
AT 944 WIDE GATE 1:20



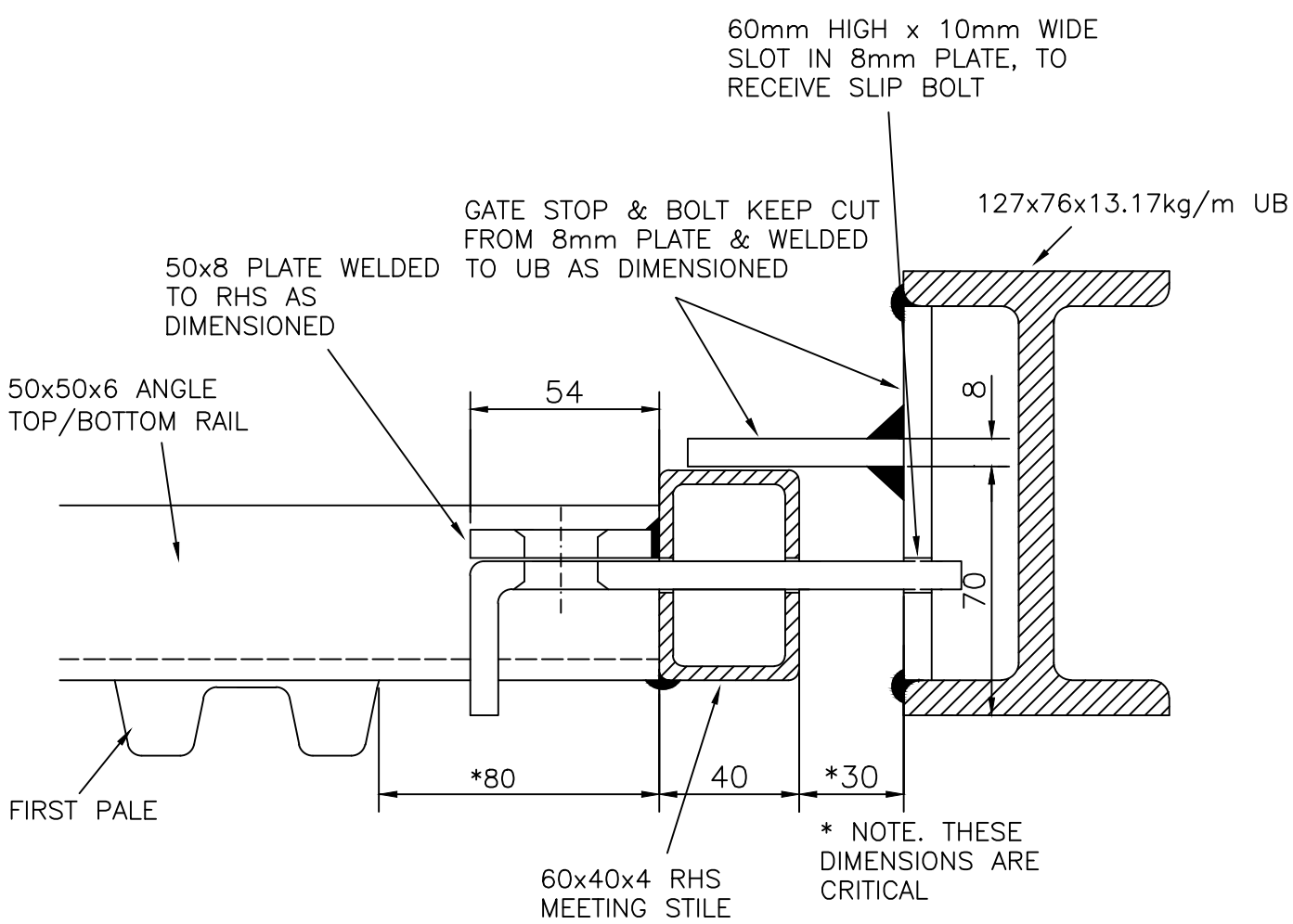
ISOMETRIC DETAIL OF
SLIPBOLT 1:2



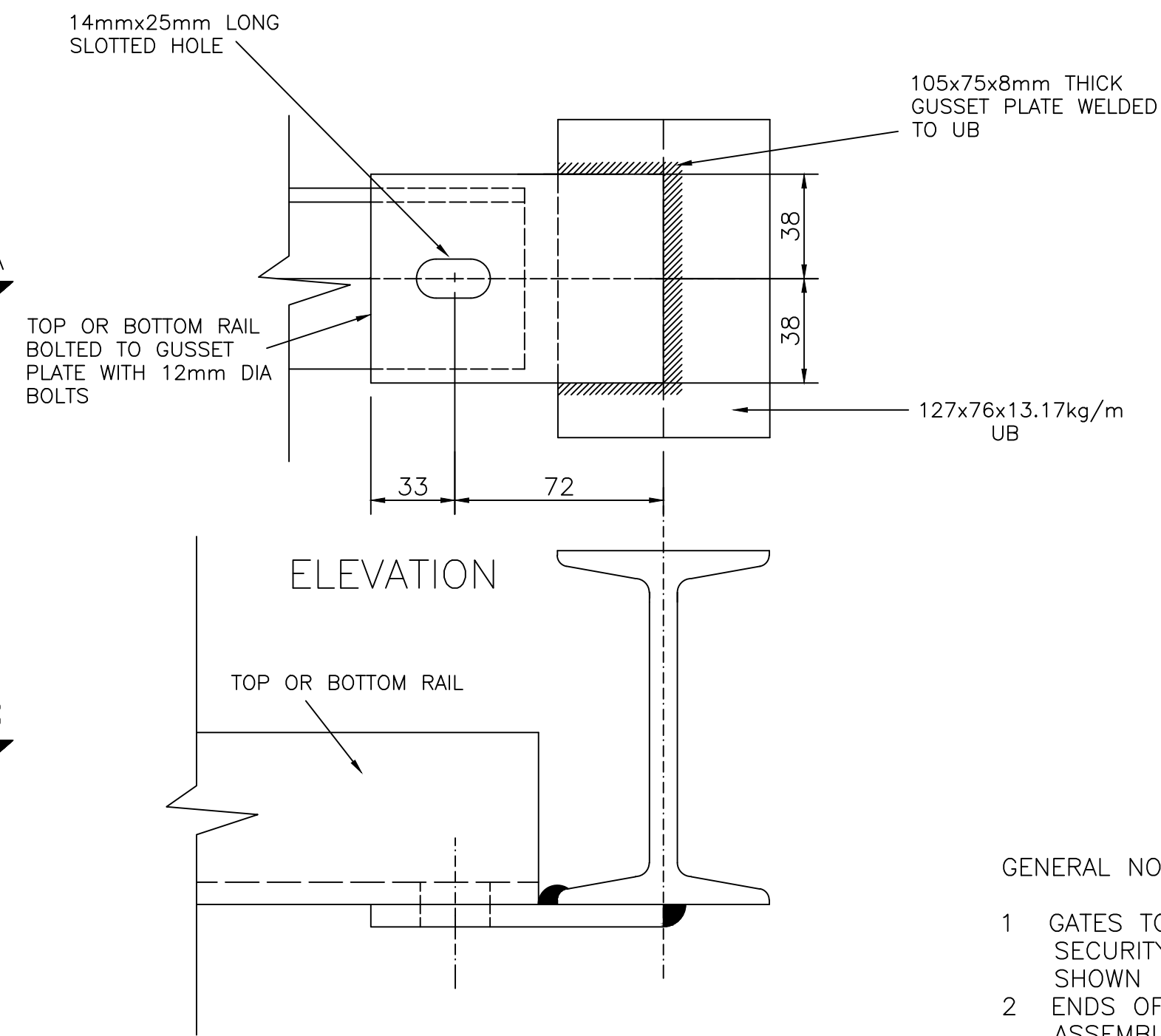
SLIPBOLT ELEVATION 1:2



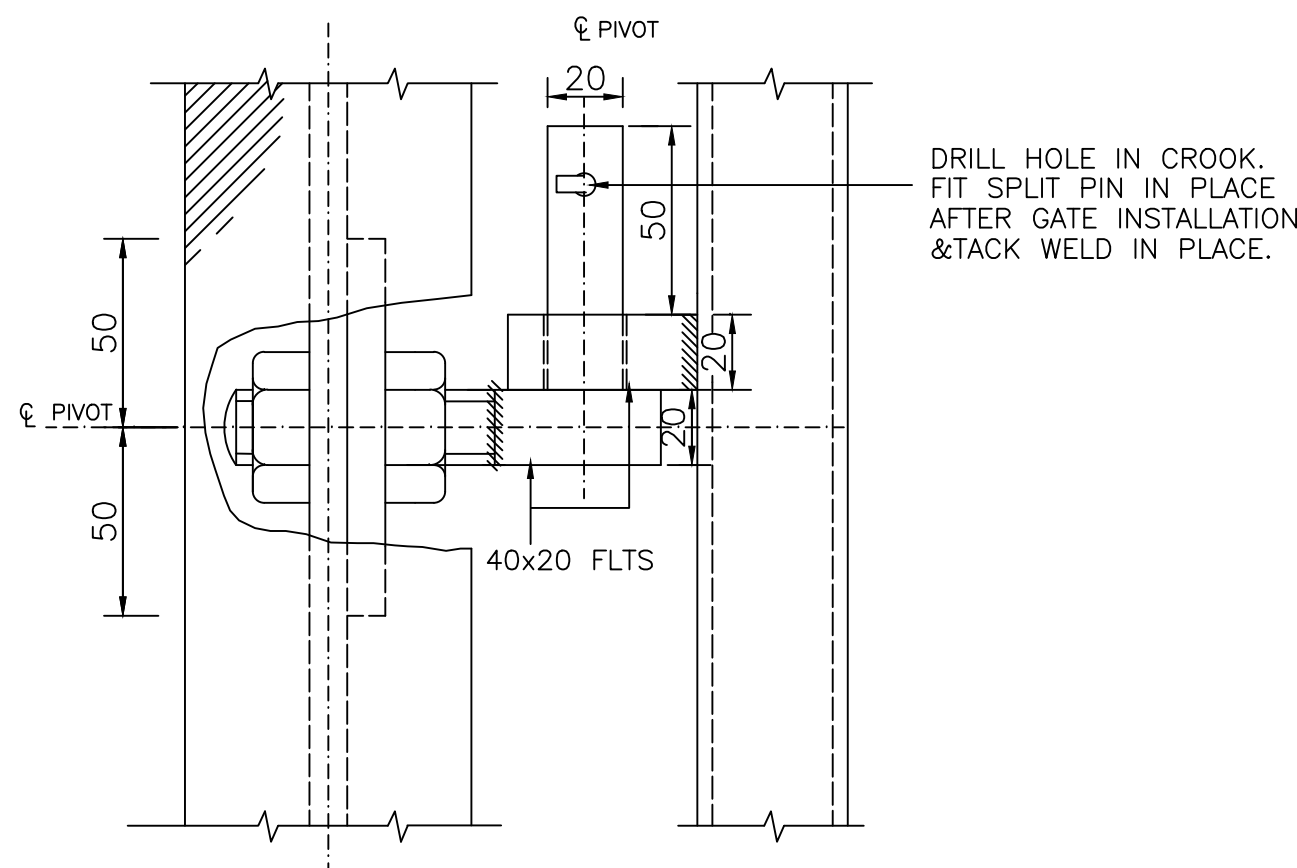
DETAIL OF SLIPBOLT
ARRANGEMENT
SECTION A-A 1:2



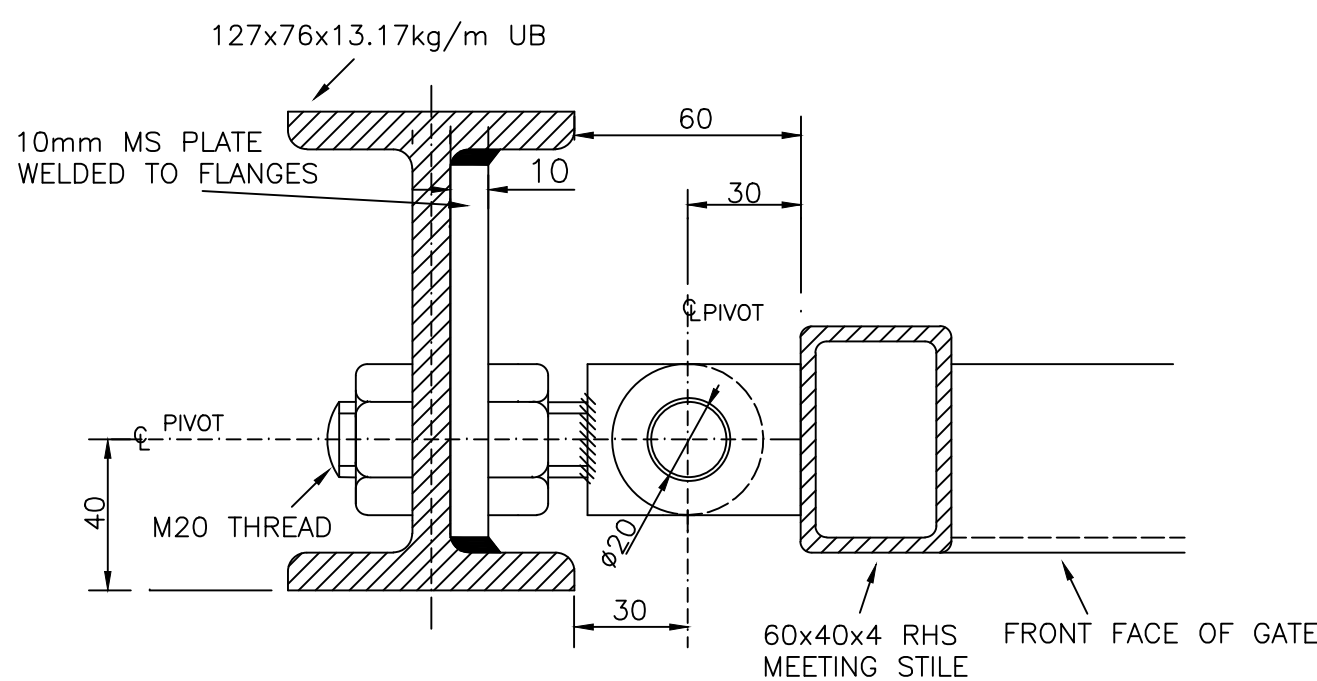
DETAIL OF SLIPBOLT
ARRANGEMENT
SECTION B-B 1:2



DETAILS OF CONNECTIONS BETWEEN
GATEPOSTS AND TOP AND BOTTOM
RAIL 1:2



DETAIL OF HINGE
1:2



PLAN OF HINGE 1:2

GENERAL NOTES

- 1 GATES TO COMPLY WITH BS1722 PART 12 1999
SECURITY GRADE PALISADE FENCE, EXCEPT WHERE
SHOWN
- 2 ENDS OF ALL BOLTS TO BE BURRED OVER AFTER
ASSEMBLY SO THAT NUTS CANNOT BE REMOVED
- 3 SPACE BETWEEN PALES, STILES AND POSTS ETC NOT TO EXCEED 84mm
- 4 GATES OF WELDED CONSTRUCTION THROUGHOUT. PALES
RING WELDED TO FRAME
- 5 WELDS TO BE DESCALED WITH MECHANICAL WIRE BRUSH OR SHOT BLASTED
- 6 GATES TO BE GALVANIZED AFTER FABRICATION TO BS 729
- 7 ALL WELDS TO BE 5mm LEG LENGTH
- 8 ALL EXPOSED GALVANIZED VENT HOLES TO BE SEALED
- 9 DAMAGED GALVANIZING ON SCREW THREADS & WELDS TO BE WIRE
BRUSHED & APPROVED ZINC RICH COLD GALVANISED PAINT APPLIED

10 MATERIALS :-

- POSTS TO BE BS4 PART 1 & BS4360 GRADE 43A
RAILS TO BE BS4848 PART 4 & BS4360 GRADE 43A
PALES TO BS4360 GRADE 43A
COLD ROLLED TO BS1449 PART 1 GRADE 4
BOLTS & NUTS HEXAGONAL TO
BS4190, CUP AND COUNTER SUNK
TO BS4933. BOLTS GRADE 4.6, NUTS GRADE 4.6
PLAIN WASHERS TO BE BS4320 TABLE 3, UNLESS OTHERWISE STATED
R.H.S. TO BS4848 PART 2 & BS4360 GRADE 43C
- 11 THIS DRAWING TO READ IN CONJUNCTION WITH GENERAL LAYOUT DRAWING
& DRG. No. YO37S1101 SHOWING APPROVED PALES
 - 12 IF NOTICE BOARDS OR BELL PUSHERS ETC ARE ATTACHED TO THE GATE
OR POST THEY SHALL BE FIXED LEVEL WITH TOP RAIL FORMING NO
FOOTHOLDS
 - 13 FOR APPROVED PALE STYLES SEE DRG. No. YO37S1101

**NORTHERN
POWERGRID**

Project: SUBSTATION STANDARD

Title: DETAILS OF SINGLE GATE
FOR 2.400m HIGH SECURITY
FENCING.(OUTWARD OPENING).

Client Dwg No. :	Rev :
FPS Dwg No. : 99/9001/01/19	G

F	Note amended	Date 08.01.03	Drawn CG	G	Dimension to bottom rail amended	Date 11.12.03	Drawn PH	A	Position of hinge, top and bottom rails amended	Date 20/10/99	Drawn CG	B	Minor amendments	C	RSJ changed to UB. Size of pockets in kerb amended	Date 8.11.99	Drawn CG	D	Extra pale added to gate. Dimensions altered to slipbolt sections and gate elevation. Notes amended	Date 7.3.99	Drawn CG	E	Titles amended	Date 17.7.00	Drawn CG	Scale : 1:20 1:2	Date : JUNE 98	Drawn : M.W.	Checked : GA	Approved : GA	CAD
		Checked GA	Approved GA			Checked GA	Approved GA			Checked GA	Approved GA					Checked GA	Approved GA			Checked LW	Approved GA			Checked GA	Approved GA						